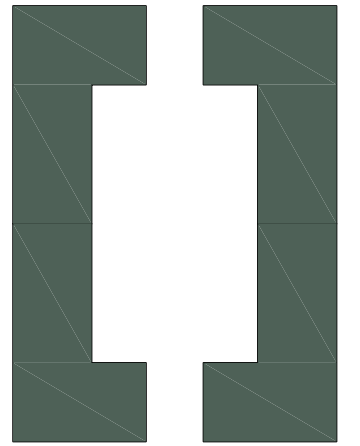
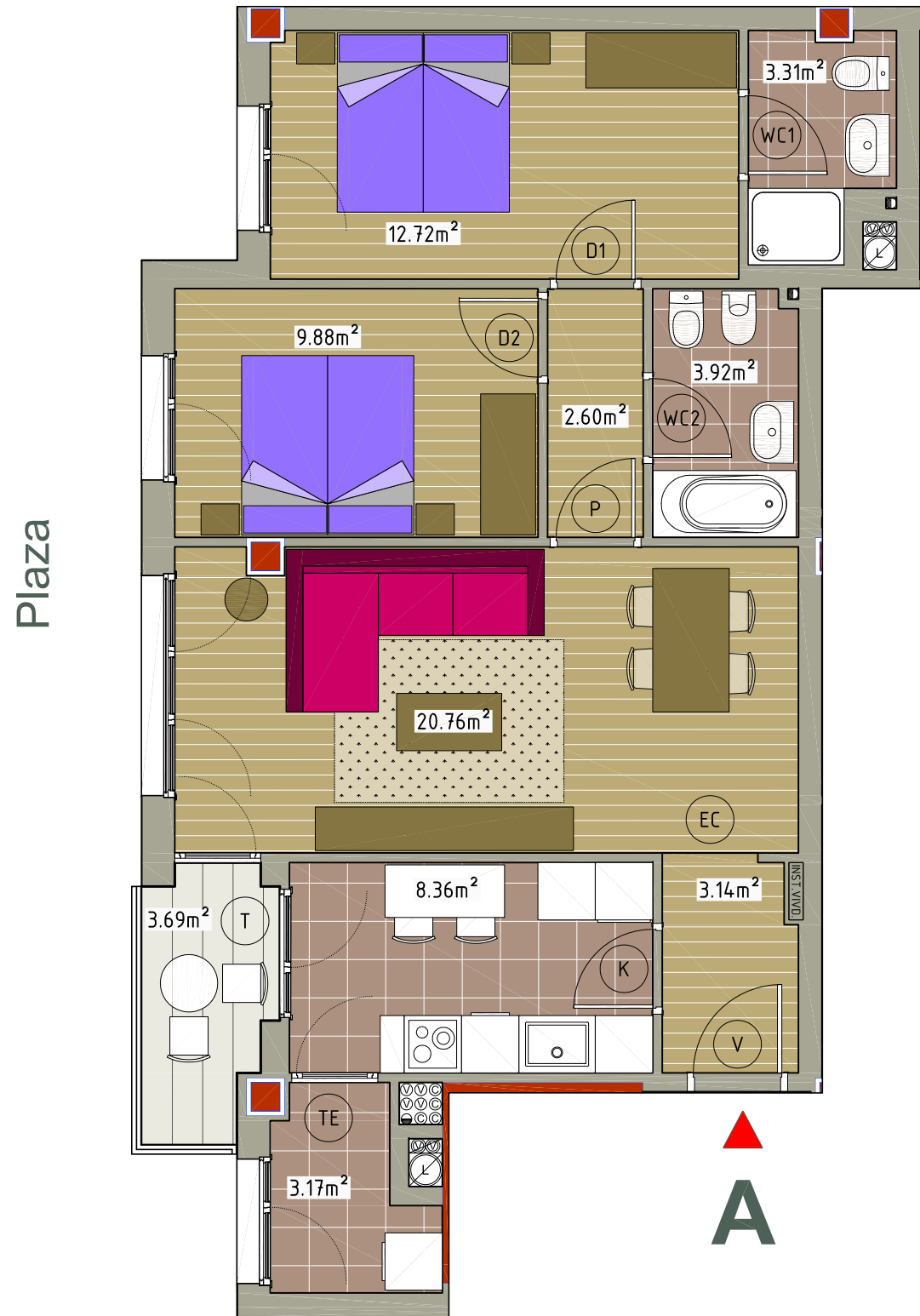


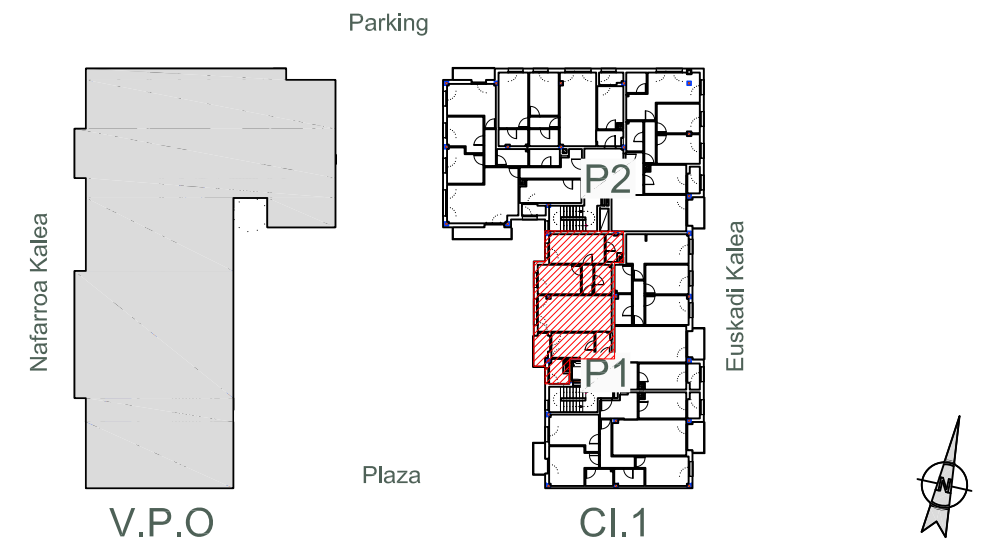
# ZAMAKOSOLUA



24 VIVIENDAS LIBRES,  
TRASTEROS Y GARAJES  
PARCELA CI.1. GALDAKAO



Vivienda A	Superficie Útil
Cocina	8.36m <sup>2</sup>
Salón Comedor	20.76m <sup>2</sup>
Dormitorio 1	12.72m <sup>2</sup>
Dormitorio 2	9.88m <sup>2</sup>
Dormitorio 3	-
Vestíbulo	3.14m <sup>2</sup>
Pasillo	2.60m <sup>2</sup>
Baño 1	3.31m <sup>2</sup>
Baño 2	3.92m <sup>2</sup>
Tendedero	3.17m <sup>2</sup>
<b>TOTAL</b>	<b>67.86m<sup>2</sup></b>
Terraza	3.69m <sup>2</sup>



GESTIONA :



Portal 1 - Segundo A

SUP. CERRADA VIVIENDA 67,86 m<sup>2</sup>

TR1 TERRAZA 3,69 m<sup>2</sup>  
TR2 TERRAZA -m<sup>2</sup>

CONSTRUYE:

