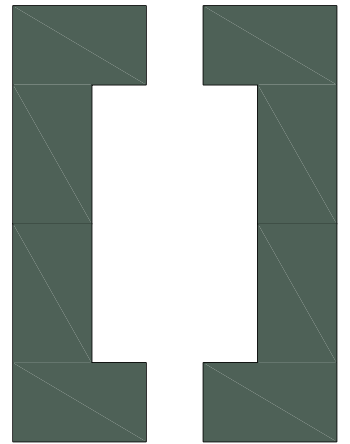
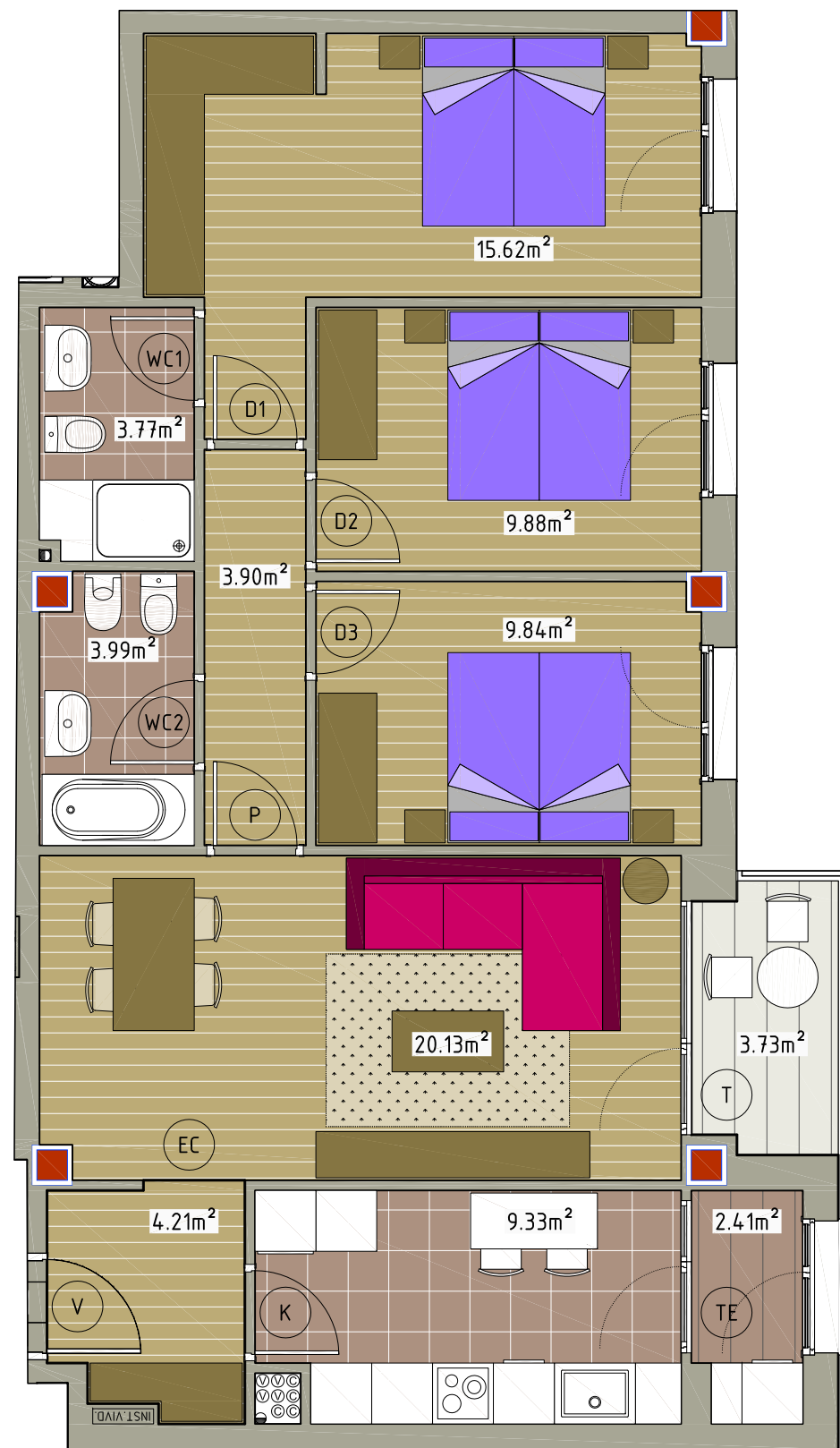


# ZAMAKOSOLUA

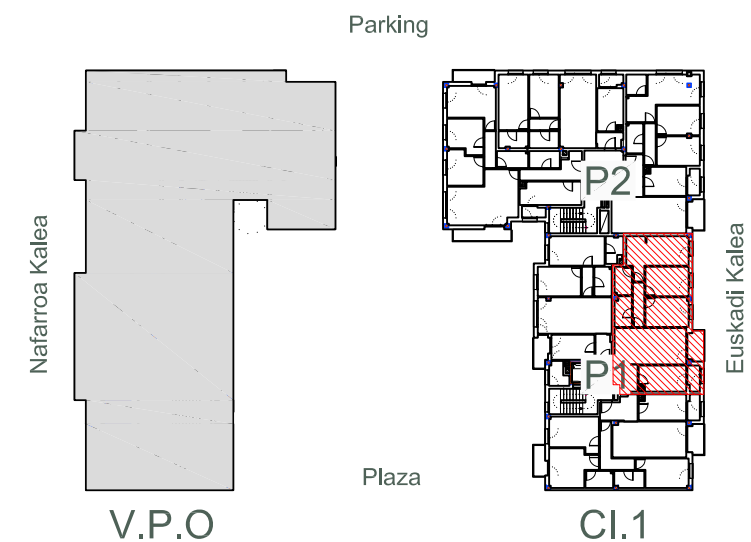


24 VIVIENDAS LIBRES,  
TRASTEROS Y GARAJES  
PARCELA CI1. GALDAKAO



Euskadi Kalea

Vivienda B	Superficie Útil
Cocina	9.33m <sup>2</sup>
Salón Comedor	20.13m <sup>2</sup>
Dormitorio 1	15.62m <sup>2</sup>
Dormitorio 2	9.88m <sup>2</sup>
Dormitorio 3	9.84m <sup>2</sup>
Vestíbulo	4.21m <sup>2</sup>
Pasillo	3.90m <sup>2</sup>
Baño 1	3.77m <sup>2</sup>
Baño 2	3.99m <sup>2</sup>
Tendedero	2.41m <sup>2</sup>
<b>TOTAL</b>	<b>83.06m<sup>2</sup></b>
Terraza	3.73m <sup>2</sup>



**B** ▶

GESTIONA :



Portal 1 - Segundo B

SUP. CERRADA VIVIENDA 83,06 m<sup>2</sup>

TR1 TERRAZA 3,73 m<sup>2</sup>  
TR2 TERRAZA -m<sup>2</sup>

CONSTRUYE:

