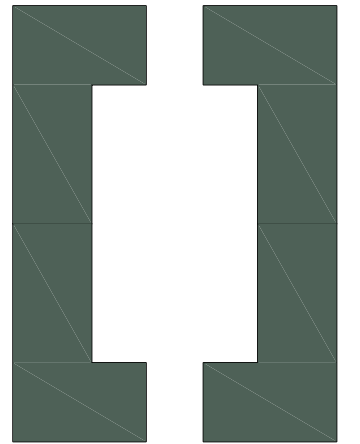


# ZAMAKOSOLUA



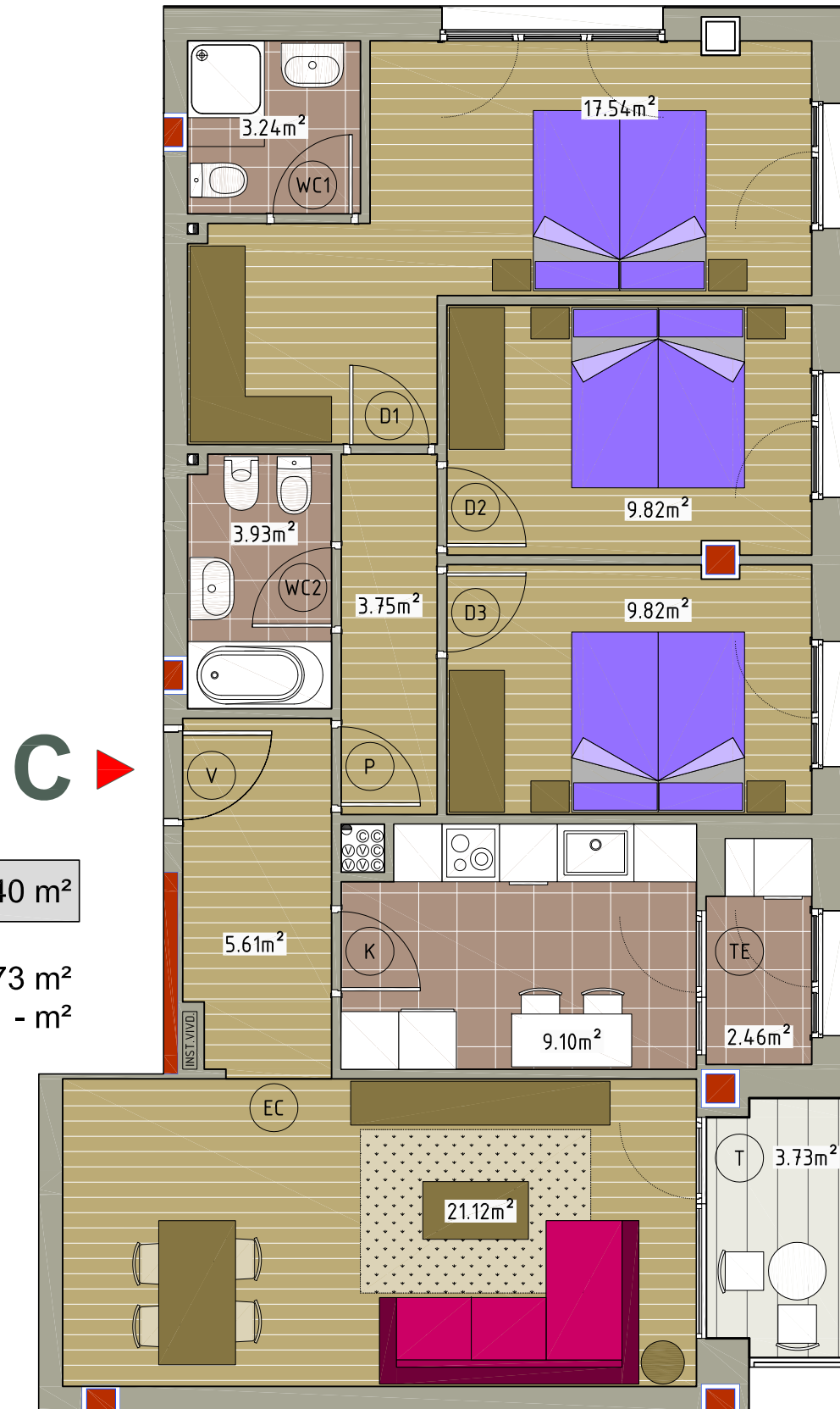
24 VIVIENDAS LIBRES,  
TRASTEROS Y GARAJES  
PARCELA CI.1. GALDAKAO



Euskadi Kalea

Vivienda C	Superficie Útil
Cocina	9.10m <sup>2</sup>
Salón Comedor	21.12m <sup>2</sup>
Dormitorio 1	17.54m <sup>2</sup>
Dormitorio 2	9.82m <sup>2</sup>
Dormitorio 3	9.82m <sup>2</sup>
Vestíbulo	5.61m <sup>2</sup>
Pasillo	3.75m <sup>2</sup>
Baño 1	3.93m <sup>2</sup>
Baño 2	3.24m <sup>2</sup>
Tendedero	2.46m <sup>2</sup>
<b>TOTAL</b>	<b>86.40m<sup>2</sup></b>
Terraza	3.73m <sup>2</sup>

Parking



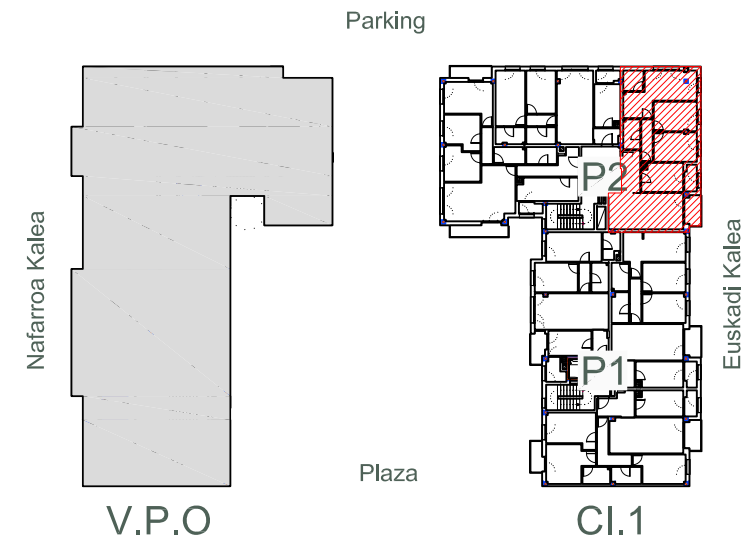
Portal 2 - Primero C

C

SUP. CERRADA VIVIENDA 86,40 m<sup>2</sup>

TR1 TERRAZA  
TR2 TERRAZA

3,73 m<sup>2</sup>  
- m<sup>2</sup>



GESTIONA :

CONSTRUYE:



UGAREN

VHSA

